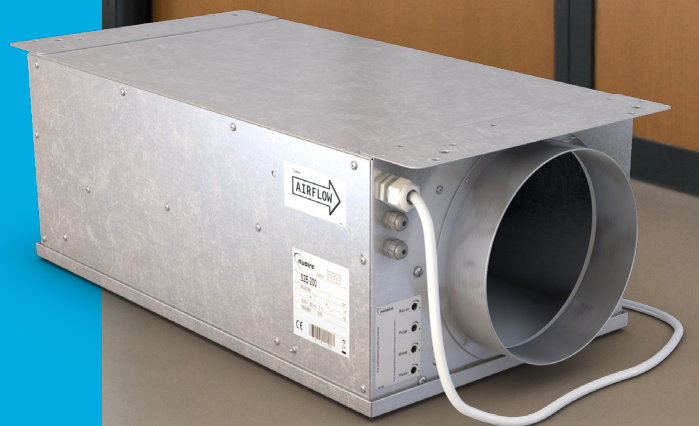




**SQURBO 2
SINGLE
EXTRACT FAN**



CONTENTS

3	ABOUT SQURBO 2
4	TECHNICAL INFORMATION
6	ANCILLARIES & DIMENSIONS
7	CONSULTANT SPECIFICATION

PROUD TO BUILD BRITISH

We've been pioneers in new air technology since 1966. Our heritage is in the design and manufacture of fans and ventilation systems. *We put our energy into efficient ventilation so you don't waste yours.*



Pioneering

We lead the way in product innovation with a stream of ground-breaking products over decades.



Trusted

We have a reputation for our build quality. We establish long term relationships and are always transparent with our test data.



Agile

We're one of the UK's leading manufacturers, covering both residential and commercial air quality. We offer innovative advice and provide flexible solutions.



Expert

Our team is made up of over 600 people, 50 of which have over 25 years' experience. We have the skills and knowledge to help find the best solution for our customers.



Attentive

We're expert listeners, rising to any challenge and going the extra mile for our customers. We add value by solving problems. We sell solutions, not fans.



Personal

We work closely with our customers and can provide bespoke solutions to meet their specific project needs. Many of our product ranges were developed this way.

“Our expertise, experience and innovation is what makes us stand out from the rest of the market.”

Wayne Glover, Managing Director, Nuaire.

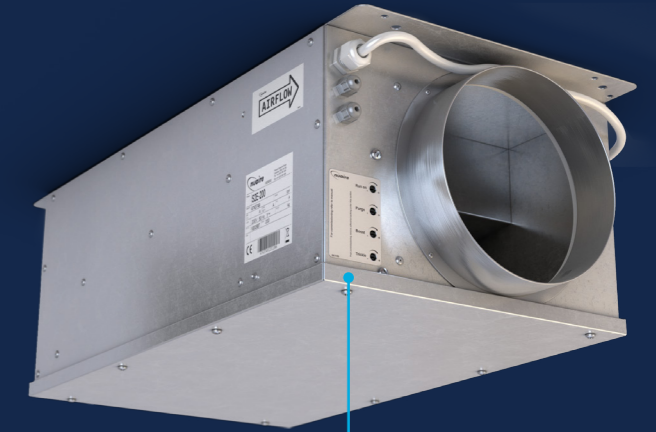


For help with selecting a unit, speak to us on **02920 858200** or email: enquiries@nuaire.co.uk

ABOUT SQURBO 2

Squrbo 2 is a powerful and efficient extract fan designed for small to medium commercial projects.

Suited to smaller applications such as WCs, storage spaces, copy rooms and server rooms. Squrbo 2 is available in four sizes with a duty range of up to 325 l/s. The range is manufactured from robust galvanised steel.



WITH IN-BUILT CONTROLS AS STANDARD, SQURBO 2 CAN BE SET TO THE REQUIRED FAN SPEED WITHOUT THE NEED FOR ANY ADDITIONAL ANCILLARIES.

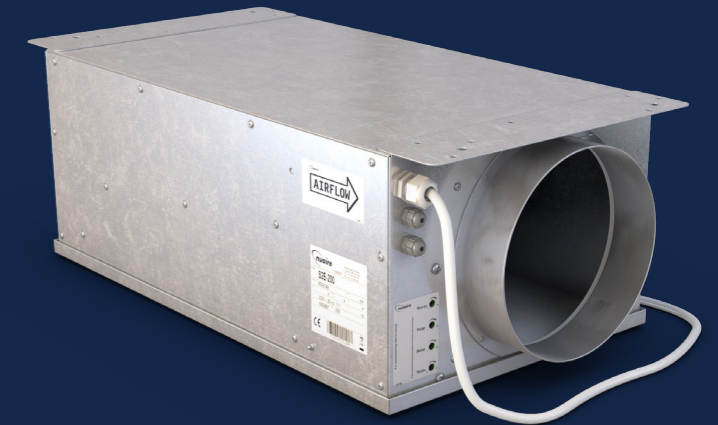
CODING S2E-125

S2E - 125
1 2

SAMPLE CODING

1. Squrbo 2 extract fan
2. Spigot diameter (125, 150, 200 or 250mm)

Squrbo 2 is for internal use only.



COMPACT

Low depth solution ideal for space restricted applications.



EASY ACCESS

Units are bottom access as standard.



FLEXIBLE INSTALLATION

Units can be mounted in any orientation.



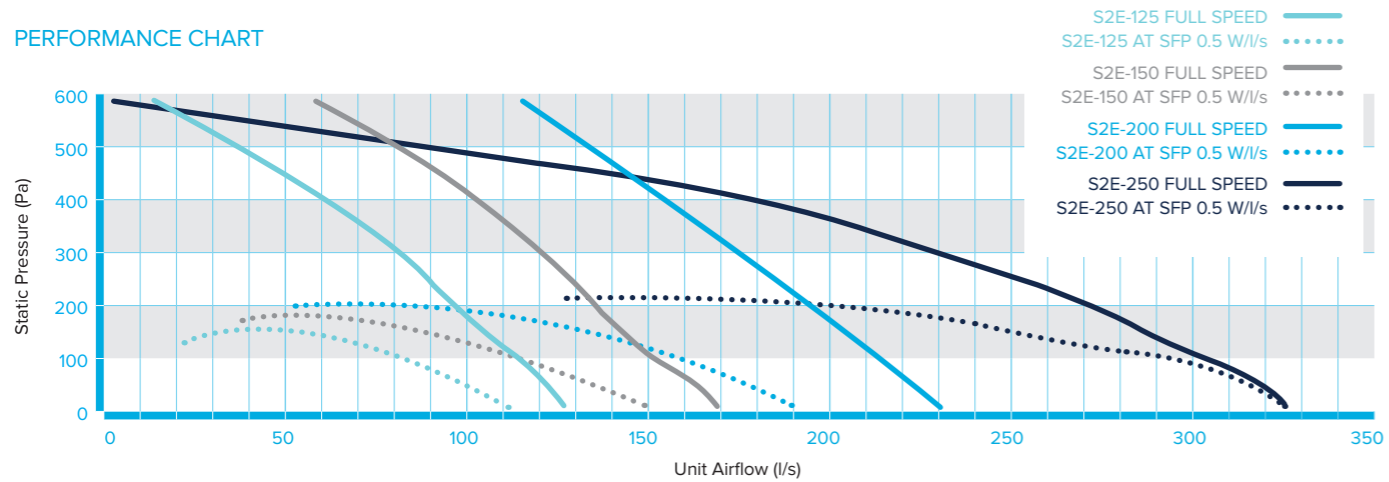
EASY MAINTENANCE

No filters means a fit and forget installation with minimal interaction.

SQURBO 2

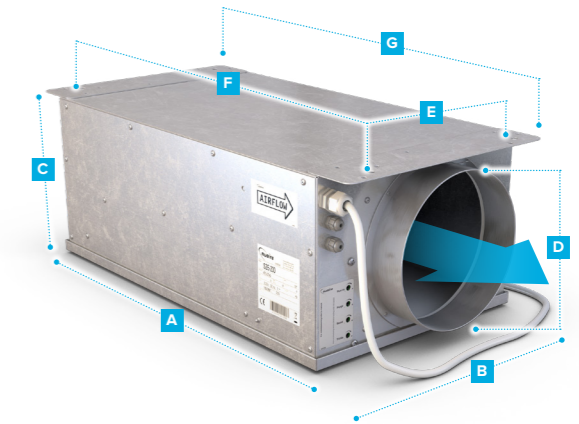
PERFORMANCE & TECHNICAL INFORMATION

PERFORMANCE CHART



DIMENSIONS (mm) & WEIGHT (kg)

CODE	A	B	C	D	E	F	G	WEIGHT
S2E-125	475	299	186	125	195	505	543	7.4
S2E-150	475	299	186	150	195	505	543	7.4
S2E-200	577	339	234	200	243	608	648	9.8
S2E-250	677	409	288	250	310	708	750	13.1



Dimensions 'E' and 'F' relate to distance between hanging bracket fixings.

SOUND DATA

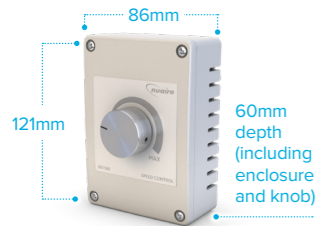
CODE	SOUND POWER LEVELS (db re 1 pW)	FREQUENCY (Hz)								BREAKOUT SOUND PRESSURE LEVEL - dBA @ 3m
		63	125	250	500	1K	2K	4K	8K	
S2E-125	Induct Inlet	87	78	74	75	48	45	37	33	-
	Induct Outlet	89	81	74	77	59	52	43	40	-
	Breakout	67	59	58	60	41	35	28	19	37
S2E-150	Induct Inlet	87	79	77	80	54	53	45	42	-
	Induct Outlet	90	79	76	78	65	59	52	49	-
	Breakout	70	59	58	63	47	41	34	26	40
S2E-200	Induct Inlet	87	81	77	74	62	58	50	48	-
	Induct Outlet	91	83	80	78	67	65	58	57	-
	Breakout	65	58	61	64	48	46	38	30	41
S2E-250	Induct Inlet	83	81	82	68	62	55	48	46	-
	Induct Outlet	84	79	81	72	65	63	53	54	-
	Breakout	65	66	70	61	52	47	36	31	43

Sound data represents units at Specific Fan Power (SFP) of 0.5 W/l/s.
 dBA value is spherical free field at a distance of 3m.
 For further information, please refer to Nuair Selector or contact Nuair directly.

TECHNICAL INFORMATION

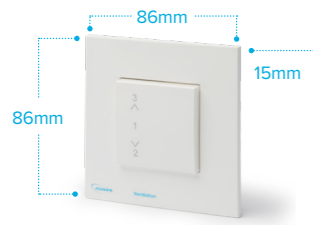
FAN CODE	PHASE	MOTOR POLE	INPUT POWER (kW)	FAN SPEED (RPM)	FLC (A)	SC (A)
S2E-125	1	2	0.083	3200	0.75	0.75
S2E-150	1	2	0.115	3635	0.9	0.9
S2E-200	1	2	0.165	4120	1.35	1.35
S2E-250	1	2	0.17	2519	1.4	1.4

SQURBO 2 ANCILLARIES & DIMENSIONS



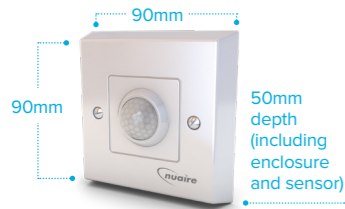
S2E-SPCON2

Remote speed controller for use with the Scurbo 2 range of extract fans. Cable supplied by others (the use of 7-2-4A cable is recommended, unshielded 4 core 0.22mm² cable, available from Farnell 3372793 or RS 202-4862).



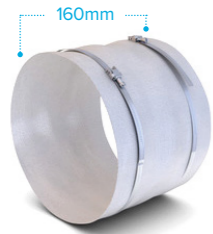
MRXBOX95-3SWITCH

3-way switch designed to speed control the fan at variable speed settings.



230-PIR

Passive Infrared (PIR) sensor with built-in run-on timer.



FLEXIBLE CONNECTOR

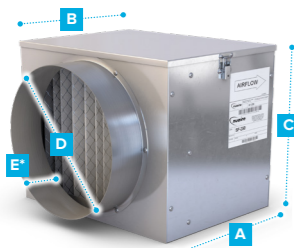
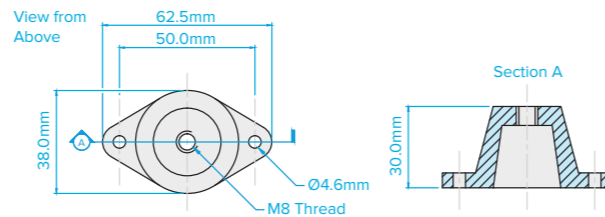
Circle flexible connector. Various sizes available for each unit in the Scurbo 2 range:

- CFC12 - for use with S2E-125
- CFC15 - for use with S2E-150
- CFC20 - for use with S2E-200
- CFC25 - for use with S2E-250



NAV1

Anti-vibration mounting kit.



FILTER CASSETTE

In-line filter cassette with EU4/ISO Coarse filter. Various sizes available for each unit in the Scurbo 2 range:

- SF-125 - for use with S2E-125
- SF-150 - for use with S2E-150
- SF-200 - for use with S2E-200
- SF-250 - for use with S2E-250

DIMENSIONS (mm) & WEIGHT (kg)

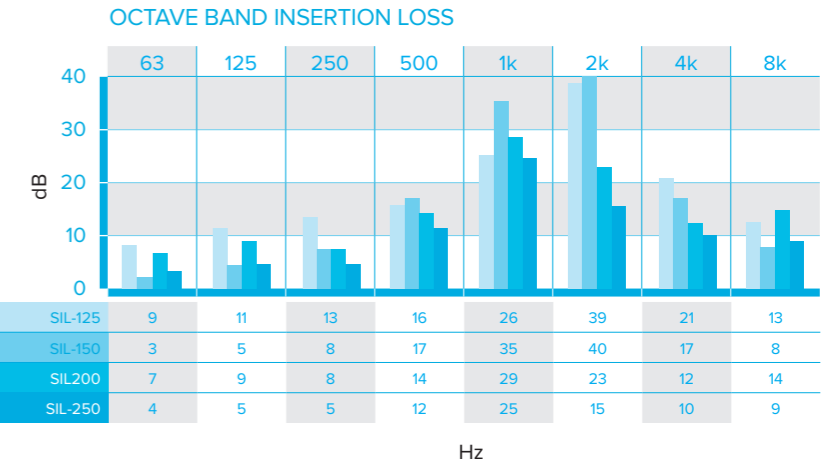
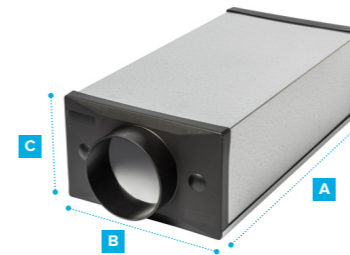
CODE	A	B	C	D	E	WEIGHT
SF-125	264	230	159	125	50	2
SF-150	264	300	184	150	50	3
SF-200	264	350	234	200	50	4
SF-250	264	350	284	250	50	6

*Spigot length from unit.

IN-LINE SILENCER

600mm length in-line round duct silencer. Various sizes available for each unit in the Scurbo 2 range:

- SIL-125 – for use with S2E-125
- SIL-150 – for use with S2E-150
- SIL-200 – for use with S2E-200
- SIL-250 – for use with S2E-250



DIMENSIONS (mm) & WEIGHT (kg)

CODE	A	B	C	WEIGHT
SIL-125	600	230	159	4.9
SIL-150	600	300	184	6.6
SIL-200	600	350	234	8.7
SIL-250	600	350	274	10.9

SQURBO 2 CONSULTANT SPECIFICATION

SQURBO2 in-line extract fan range. Low depth casing rectangular in section manufactured from galvanised steel with aluminium circular spigots fitted to either end of the case.

Fan is single skin, with lined lid.

The unit is suitable for internal mounting only in any orientation, incorporating a fully removable access panel providing access to blower and PCB. The unit is supplied fitted with 2 mounting brackets on either end.

The fan impeller and EC motors are selected to provide optimum performance and efficiency to conform to Part L regulations. Units are suitable for operation in ambient temperatures of up to 50°C.

The unit shall be controlled by a PCB providing: 3-speeds (trickle, boost & purge), run on timer, fan fail (volt free) and connection for (optional) external speed controller (code: SE2-SPCON). The 3 speeds are variable and will be set by the installer.

The Fan unit shall have a 2 year warranty (UK and Republic of Ireland only).

OPTIONAL ANCILLARIES:

S2E-SPCON2 - Remote speed controller for use with the Scurbo 2 range of extract fans. Cable supplied by others (the use of 7-2-4A cable is recommended, unshielded 4 core 0.22mm² cable, available from Farnell 3372793 or RS 202-4862).

MRXBOX95-3SWITCH - 3-way switch designed to speed control the fan at variable speed settings.

230-TSTATR - 230V Mains room thermostat.

230-PIR - PIR with Run on Timer.

FLEXIBLE CONNECTOR CFC12, 15, 20 and 25 - Circle flexible connector.

NAV1 - Anti-vibration mounting kit.

FILTER CASSETTE SF-125, 150, 200 and 250 - Filter cassette with circular spigot and G4/ISO Coarse filter.

IN-LINE SILENCER SIL-125, 150, 200 and 250 - Inline silencer, 600mm length with circular spigot.

COMMERCIAL

WWW.NUAIRE.CO.UK/COMMERCIAL

RESIDENTIAL

WWW.NUAIRE.CO.UK/RESIDENTIAL

INTERNATIONAL

WWW.NUAIRE.CO.UK/INTERNATIONAL



WESTERN INDUSTRIAL ESTATE | CAERPHILLY | CF83 1NA
T 029 2085 8200 **F** 029 2085 8300 **E** INFO@NUAIRE.CO.UK
WWW.NUAIRE.CO.UK